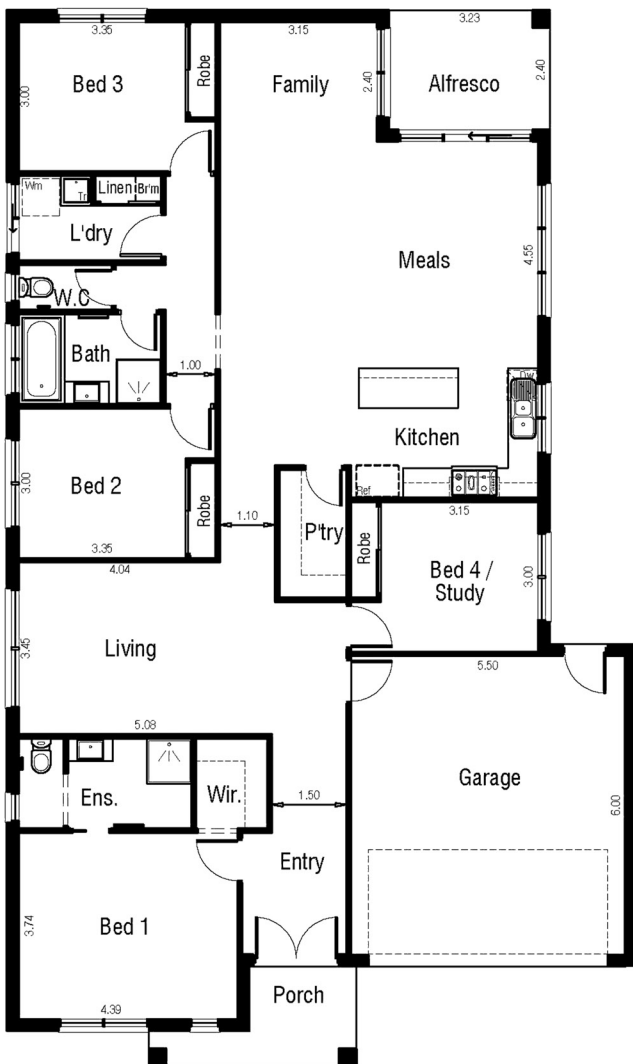




TRURO 25



Specifications

Home width	12.65
Home length	20.50
Total Area (m2)	232.64
Min. lot width	14
Min. lot length	28

Room Dimensions

Meals / Family	4.55 x 3.15
Living	5.08 x 3.45
Master bedroom	3.74 x 4.39
Bedroom 2	3.00 x 3.35
Bedroom 3	3.00 x 3.35
Bedroom 4 / Study	3.15 x 3.00
Garage	5.50 x 6.00

Areas Analysis

Dwelling	183.00m2
Garage	36.18m2
Alfresco	7.75m2
Porch	5.71m2
Total	232.64m2
	25.04 sqs

Price includes standard floorplan with modern facade option. Images are for illustrative purposes only and may depict upgrade options and homes as displayed. The price does not include landscaping, blinds, furniture and other decorative items..