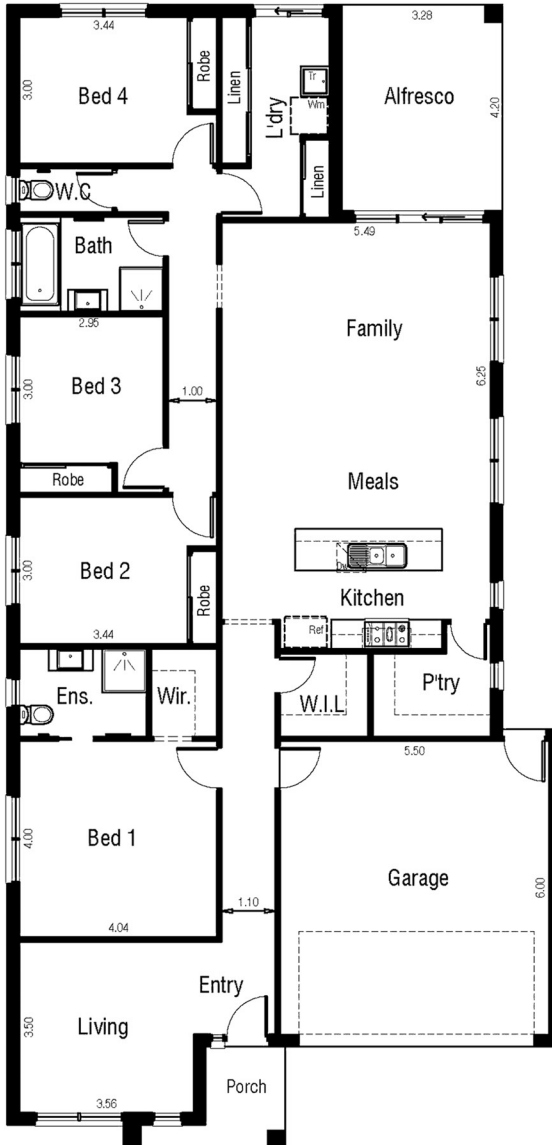




DAYMAN 25



Specifications

Home width	11.30
Home length	22.85
Total Area (m ²)	233.02
Min. lot width	12.5
Min. lot length	32

Room Dimensions

Meals / Family	5.49 x 6.25
Living Room	3.50 x 3.56
Master bedroom	4.00 x 4.04
Bedroom 2	3.00 x 3.44
Bedroom 3	3.00 x 2.95
Bedroom 4	3.00 x 3.44
Garage	5.50 x 6.00

Areas Analysis

Dwelling	179.19m ²
Garage	36.05M ²
Alfresco	13.78m ²
Porch	4.00m ²

Total	233.02m²
	25.08 sqs

Price includes standard floorplan with modern facade option. Images are for illustrative purposes only and may depict upgrade options and homes as displayed. The price does not include landscaping, blinds, furniture and other decorative items..